

Blue's One CTI TAPI

The easiest, most efficient and integrated way to communicate with style.

As easy as a mobile phone,
as powerful as a PC

Blue's One is the last generation CTI software (Computer Telephony Integration) that simplify your work on the phone.

Look for a contact in all phone books, call directly from within applications you use every day, check who is calling you and who was looking for you on the fly, send SMS from your PC.

Finally on your desk phone too you will have the comfort and easiness of your mobile phone. You will love your new Blue's One too!

Integrated with your address books,
your CRM-ERP and other applications

Blue's One allows you, with a single search, to find on the fly a contact in all your phone books and no need to waste your time to remember where you saved a contact name or a telephone number.

Blue's One integrates with Microsoft Outlook 2000-2007, Windows Mail, with all products of the Blue's Call Management Suite, with SalesForce CRM and you databases such as MS Access, Excel, SQL Server, Active Directory, LDAP, ODBC, SkyStone (Skype gateway), Exchange, Lotus Notes, etc.

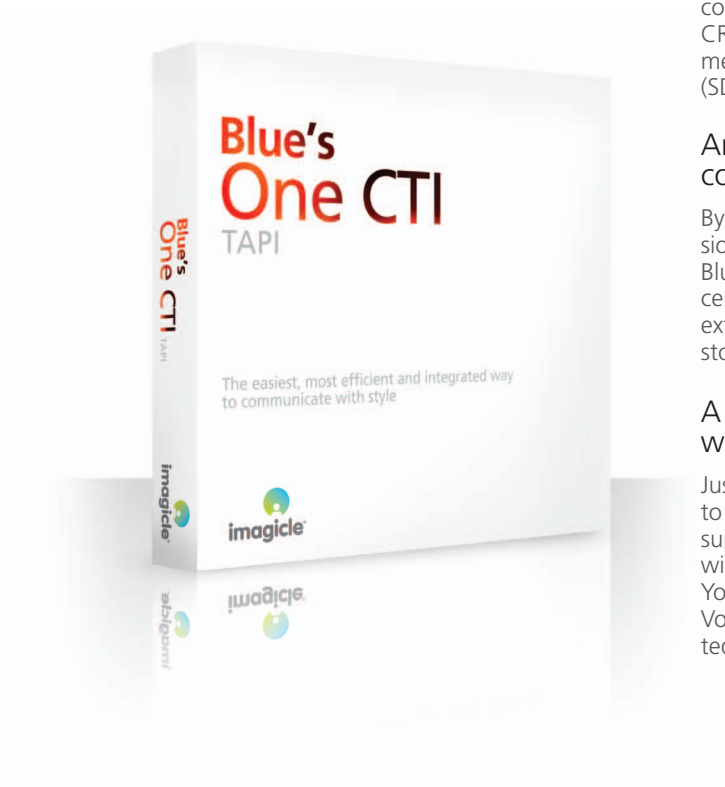
With one click you can directly access the Outlook contact card or the equivalent card in any other CRM-ERP system integrated with Blue's One by means of the free Software Development Kit (SDK).

An handy phone book for your
company extensions

By means of integration with your Blue's (Professional, Enterprise 4, Billy Blue's 4 ed Hotel Pro), Blue's One immediately makes you available the centralised shared phone book with all the internal extensions, colleagues names, departments as your stored in your Blue's.

A client solution working
with every PBX

Just install Blue's One on your PC and it is ready to use. It is compatible with any telephone system supporting standard TAPI 2.X protocol and even with your new Microsoft Windows Vista. You can combine it with any analogue, digital or VoIP telephone and if you use the headset connected to the telephone it is really unbeatable.



Blue's One CTI

TAPI

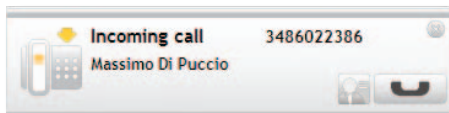
Communicate with style to save time and improve your productivity.

- Call from any application
- See who is calling you
- Search a contact in any phonebook
- Open you CRM - ERP contact card



You always know who you got contacted from

With notification pop-up, Blue's One let you know who is calling by associating the caller number with the name available in the connected address books.



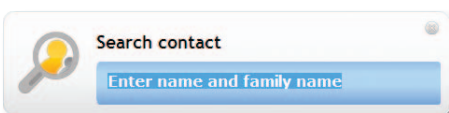
Click on the contact icon to access to the full contact card available in your CRM - ERP.

If you missed a call, a message on your desktop will be prompted and will stay active to inform about the caller details so that you can call your contact back on the fly!

Speed up your work with Blue's One Hotkeys

Blue's One allows you to configure special key combinations of your PC keyboard (HotKey) to use the telephone in a prompt and easy way.

- :: Select and call [CTRL+1]
- :: Search contact [CTRL+2]
- :: Send Short Text Message [CTRL+3]



Your favorites contacts always available at hand

Thanks to a convenient window, your favourite contacts will be at hand without performing searches. You can therefore organise your contacts based on your needs for best efficiency.

Take control of your work with Blue's One registry and monitor

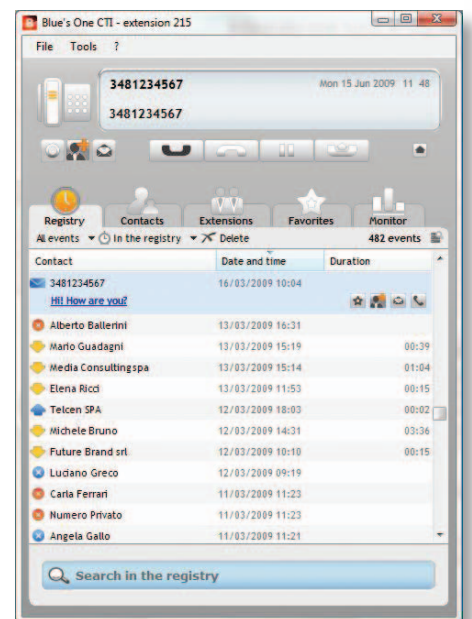
Blue's One easily analyses your personal communication in real time. Easy to understand charts and tables will display stats about your telephone habits. Blue's One registry also shows your call and text message details for you to quickly know how frequently you are calling a person or details about your last call.

With Voice Memory is the ideal solution to record your calls

Blue's One integrates with Blue's Voice Memory to record any conversation on your PC's hard disk in MP3 format, automatically associating the phone book contact name to the recording file name.

Call via Skype from your desk phone

With Blue's One and Skystone, you can look up and call your Skype contact with a click directly from your desk phone with no need to install or use Skype or headsets for your PC.



Requirements and compatibility for Blue's One

Interoperability with platforms and system requirements are continuously updated; you can verify them on our website in the sections dedicated to the product specification pages.

Blue's One is available in ITA, ENG, FRA, DEU, ESP